
Construction Parking and Access Strategy

North Strathfield for Sydney Metro West

CLNK-SYNC-CPAS-NST
|
Revision 01
Date: 29 October 2025

Table of contents

1	Introduction	3
1.1	Project Overview	3
1.2	Scope of this CPAS	3
2	Project scope	5
3	Summary of parking impacts	5
4	Existing conditions and parking survey	6
4.1	Residential parking permit schemes	8
5	Parking and access impacts	8
5.1	General impacts	8
5.2	Construction access and egress	8
5.3	Worksite and worker parking	8
6	Mitigation measures	9
6.1	Consultation	9
6.2	Mitigation and contingency	9
6.3	Marshalling and queueing	9
6.4	Training	9
7	Monitoring and reporting	9
7.1	Monitoring	9
7.2	Reporting	9
	Appendix A – Vehicle movement plans	10
	Appendix B – Evidence of consultation	11

List of tables

Table 1: Compliance Matrix	4
Table 2 Summary of parking impacts and duration	5
Table 4 Parking survey results North Strathfield	7
Table 5 Parking survey results Gracemere Street	8

List of figures

Figure 1 Existing conditions and parking survey areas for North Strathfield	6
Figure 2 Survey area Gracemere Street	7

1 Introduction

This Construction Parking and Access Strategy (CPAS) document has been developed to outline the construction parking and access arrangements, and associated parking impacts as part of the Sydney Metro West Project, specifically as part of the Sydney Metro West Electrical Connection and Termination Works at the North Strathfield Station site, as part of the Sydney Metro West Project.

This approval has been developed to ensure safe delivery of the Project Works in accordance with the Project Approval, while achieving the requirements specifically of conditions D90, D91, D92 and D93.

1.1 Project Overview

Sydney Metro is Australia's biggest public transport project. Building, operating and maintaining a network of four metro lines, 46 stations and 113km of new metro rail.

Sydney Metro is revolutionising how Australia's biggest city travels, connecting Sydney's north west, west, south west and greater west to fast, reliable turn-up-and-go metro services with fully accessible stations.

The NSW Government is delivering Sydney Metro West – a new underground metro railway which will double rail capacity between Parramatta and the Sydney CBD, transforming Sydney for generations to come.

This once-in-a-century infrastructure investment will provide fast, reliable turn-up-and-go metro services with fully accessible stations, link new communities to rail services and support employment growth and housing supply. Stations have been confirmed at Westmead, Parramatta, Sydney Olympic Park, North Strathfield, Burwood North, Five Dock, The Bays, Pyrmont and Hunter Street in the Sydney CBD.

Sydney Metro West will target an opening date of 2032.

1.2 Scope of this CPAS

This CPAS document will detail how the Project will satisfy the requirements of the Conditions of Approval relating to the Construction Parking and Access Strategy. The CPAS will describe how worker parking will be facilitated, monitored and implemented and any require mitigation measures which need to be implemented.

The works reflected in this phase of the construction works at North Strathfield is limited in size and duration (with a program extending for approximately five (5) months, but with only very limited construction vehicle movements daily). The works also have very limited impacts on the existing parking, with only limited areas proposed for use for construction and utility works, as well as the impacts because of detoured traffic during some of the utility activities. Impacts would only be temporary and short-term.

This plan only relates to the electrical connection and termination works required at North Strathfield Station as part of the Sydney Metro West Project, specifically as part of Phase J as outlined in the Project Phasing Report. The requirements of the Minister's Condition relating to the CPAS are summarised below, within Table 1: Compliance Matrix.

Table 1: Compliance Matrix

Document	Reference	Requirement	Where addressed
Instrument of Approval - SSI-10038	D90	Vehicles associated with the project workforce (including light and Heavy Vehicles) must be managed to: (a) minimise parking on public roads; (b) minimise idling and queueing on state and regional roads; (c) not carry out marshalling of construction vehicles near sensitive land user(s); (d) not block or disrupt access across pedestrian or shared user paths at any time unless alternate access is provided; and (e) ensure spoil haulage vehicles adhere to the nominated haulage routes identified in the CTMPs.	As follows: 5.3 Worksite and worker parking 6.3 Marshalling and queueing 6.3 Marshalling and queueing 6.3 Marshalling and queueing N/A (No spoil haulage)
	D91	A Construction Parking and Access Strategy must be prepared to identify and mitigate impacts resulting from on- and off-street parking changes during construction. The Construction Parking and Access Strategy must include, but not necessarily be limited to: (a) achieving the requirements of Condition D90 above; (b) confirmation and timing of the removal of on- and off-street parking associated with construction of Stage 1 of the CSSI; (c) parking surveys of all parking spaces to be removed or occupied by the project workforce to determine current demand during peak, off-peak, school drop off and pickup, weekend periods and during special events; (d) consultation with affected stakeholders utilising existing on- and off-street parking stock which will be impacted as a result of construction; (e) assessment of the impacts to on- and off-street parking stock taking into consideration, occupation by the project workforce, outcomes of consultation with affected stakeholders and considering the impacts of special events; (f) identification of reasonable and practicable mitigation measures to manage impacts to stakeholders as a result of on- and off-street parking changes including, but not necessarily limited to, staged removal and replacement of parking, provision of alternative parking arrangements, managed staff parking arrangements and working with relevant council(s) to introduce parking restrictions adjacent to work sites and compounds or appropriate residential parking schemes; (g) where residential parking schemes already exist, off-road parking facilities must be provided for the project workforce; (h) mechanisms for monitoring, over appropriate intervals (not less than 6 months), to determine the effectiveness of implemented mitigation measures; (i) details of shuttle bus service(s) to transport the project workforce to construction sites from public transport hubs and off-site car parking facilities (where these are provided) and between construction sites; (j) provision of contingency measures should the results of mitigation or monitoring indicate implemented measures are ineffective; and (k) provision of reporting of monitoring results to the Planning Secretary and Relevant Council(s) at six (6) monthly intervals.	As follows: Refer above 3 Summary of parking impacts 4 Existing conditions and parking survey 6.1 Consultation 3 Summary of parking impacts and 6.1 Consultation 6.2 Mitigation and contingency 5.3 Worksite and worker parking 7.1 Monitoring N/A 6.2 Mitigation and contingency 7.2 Reporting

Document	Reference	Requirement	Where addressed
	D92	The Construction Parking and Access Strategy must be submitted to the Planning Secretary for approval at least one (1) month before the commencement of any construction that reduces the availability of existing parking. The approved Construction Parking and Access Strategy must be implemented before impacting on on-street parking and incorporated into the CTMPs.	This document
	D93	During construction, all reasonably practicable measures must be implemented to maintain pedestrian, cyclist and vehicular access to, and parking in the vicinity of, businesses and affected properties. Disruptions are to be avoided, and where avoidance is not possible, minimised. Where disruption cannot be minimised, alternative pedestrian, cyclist and vehicular access, and parking arrangements must be developed in consultation with affected businesses and implemented before the disruption. Adequate signage and directions to businesses must be provided before, and for the duration of, any disruption.	5.1 General impacts

2 Project scope

As described in the Sydney Metro West Stage 1 - Phasing Report, a small portion of electrical works has been transferred from the Central Tunnelling Package to an alternate contractor relating to the establishment of an electrical kiosk at North Strathfield to provide high voltage power to the site for follow-on contractors. The Principal Contractor will be responsible for completing the design for this scope and conducting the remaining works.

The majority of the work to establish a high voltage power connection has been completed by the Central Tunnelling Package Contractor and only requires modifications to the end connection points at the kiosk and the live mains. The North Strathfield Power Enabling Works includes the following physical activities:

- Investigations to establish locations of existing utilities
- Retrenching for low voltage (LV) works
- Installation of electrical kiosk including internal reticulation and outage preparation works

These works will be completed over approximately a five-month period, however the anticipated impacts to parking is likely limited to only approximately five (5) shifts for Waratah Street and six (6) shifts for Gracemere Street (subject to weather and construction productivities).

3 Summary of parking impacts

Removal of public parking spaces detailed within this CPAS is minimal, an overview of the proposed parking removal is provided below within with Table 2. The spaces referenced are in accordance with Area 3 as shown in Figure 1, below.

Table 2 Summary of parking impacts and duration

Overview of parking removal			
Location	Parking spaces removed under this CPAS	Timeframe for impact	
		Indicative duration	Indicative dates
Waratah Street	2	5 shifts	From 16 th Nov 2025 to 3 rd Jan 2026
Gracemere Street	1	6 shifts	From 16 th Nov 2025 to 3 rd Jan 2026

4 Existing conditions and parking survey

As the works requires the temporary removal of some on-street parking on Waratah Street, parking surveys have been undertaken on parking in the immediate vicinity of the proposed removal. It should be noted that the duration and extent of the parking removal is limited to an estimated two (2) parking spaces, and for only five (5) work shifts.

The area where parking has been surveyed is outlined in Figure 1, below with the results of the survey included in Table 3.

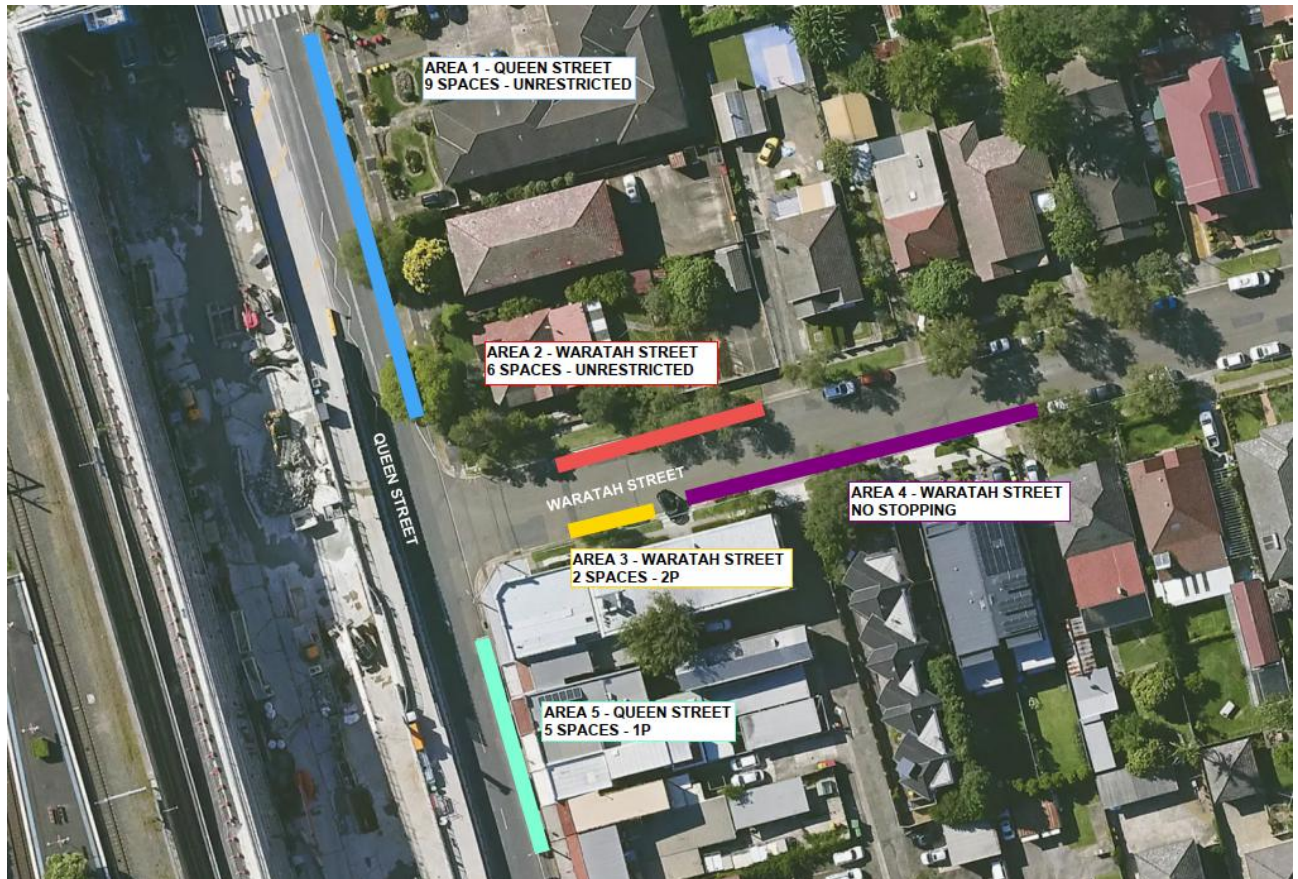


Figure 1 Existing conditions and parking survey areas for North Strathfield

Table 3 Parking survey results North Strathfield

Day	Time period	Occupied spaces	Unoccupied spaces	Total available spaces	Parking occupancy
Area 1 – Queen Street					
Average weekday	8:30am	4	5	9	44%
	3pm	6	3	9	67%
	5pm	4	5	9	44%
Average weekend	12pm	3	6	9	33%
Area 2 – Waratah Street					
Average weekday	8:30am	6	0	6	100%
	3pm	6	0	6	100%
	5pm	6	0	6	100%
Average weekend	12pm	6	0	6	100%
Area 3 – Waratah Street					
Average weekday	8:30am	2	0	2	100%
	3pm	2	0	2	100%
	5pm	2	0	2	100%
Average weekend	12pm	1	0	2	50%
Area 5 – Queen Street					
Average weekday	8:30am	4	1	5	80%
	3pm	4	1	5	80%
	5pm	3	2	5	60%
Average weekend	12pm	5	0	5	100%

Area 4 has not been captured in the table as it is a no stopping area.

Further to Waratah Street, parking surveys have also been undertaken on Gracemere Street due to the need for the localised parking space removal during detour arrangements being in place temporarily, during some of the works. This is only anticipated to be required for six (6) shifts when Beronga Street closure is in place and detoured.

The area surveyed on Gracemere Street is outlined in Figure 2, below.



Figure 2 Survey area Gracemere Street

Table 4 Parking survey results Gracemere Street

Day	Time period	Occupied spaces	Unoccupied spaces	Total available spaces	Parking occupancy
Area 6 – Gracemere Street					
Average weekday	8:30am	0	2	9	0%
	3pm	0	2	9	0%
	5pm	0	2	9	0%
Average weekend	12pm	0	2	9	0%

4.1 Residential parking permit schemes

There is no residential parking permit scheme affecting the survey area outlined in Figure 1, above.

5 Parking and access impacts

5.1 General impacts

As part of the works there will be times where localised, short-term removal of parking is required under a Road Occupancy Licence (ROL) or Council Permit. Short-term removal of parking would include works which are for a single, or series of shifts but would be reinstated at the completion of the activity.

These short-term removal scenarios would be necessary where utility works or footpath works are required. Where this occurs (as described within this document) any short-term on-street parking which has been removed, will be reinstated following the expiration of the associated ROL or permit. All reasonable measures will be undertaken to maintain access to parking and footpaths in the vicinity of the works. Where access cannot be maintained, alternatives will be provided in accordance with condition D93.

The parking impacts are expected to be negligible as there was sufficient parking in the immediate vicinity of the works to accommodate the two displaced vehicles in North Strathfield, during the works. There is also expected to be minimal impact as a result of the removal of the one parking space on Gracemere Street during works, as there was observed to be sufficient parking in the adjacent area to accommodate any possible displaced vehicle.

There is also good access to public transport for both workers and locals.

5.2 Construction access and egress

Construction to and from the various worksites will be in accordance with the approved routes in the EIS, and as outlined in the Heavy Vehicle Local Road approval document for the works and as outlined in the Construction Traffic Management Plan for the works.

5.3 Worksite and worker parking

Work vehicles will be encouraged to park within the project compound areas for standard construction activities on a day to day basis. This will minimise parking on local roads and streets in accordance with condition D90 (a).

The number of workers on a typical shift is expected to be fewer than ten (10), with train and public transport access possible due to the works proximity to the North Strathfield train station.

6 Mitigation measures

6.1 Consultation

This CPAS document has been provided to the City of Canada Bay Council for review and comment, with correspondence being included in Appendix B.

Those directly affected by the parking removal will be consulted as part of project community consultation processes, in advance of the works.

6.2 Mitigation and contingency

Due to the limited duration and impact of the proposed parking removal the mitigation and contingency measures are limited to endeavouring to minimise the duration of the impact, while still safely undertaking the works.

6.3 Marshalling and queueing

Vehicle movement plans will include notes that instruct workers to not park or idle construction vehicles on roads near sensitive land use areas. They will also include notes to ensure their parking does not block or disrupt access for pedestrians or shared user paths in accordance with condition D90.

6.4 Training

Workers will be trained in the requirements of this CPAS document, including the Vehicle Movement Plans and the various requirements relating to marshalling, queueing and disrupting access.

7 Monitoring and reporting

7.1 Monitoring

As the proposed impact duration and extent is limited, no formal monitoring is proposed. Workers will be trained in the commitments and obligations under the Project Approval. They will be encouraged to review parking impacts in the area as part of short-term inspections undertaken by traffic controllers or site supervisors.

7.2 Reporting

The works are only expected to last approximately five (5) months, and the impacts of the proposed occupation of parking is expected to only take approximately five (5) shifts for Waratah Street and six (6) shifts for Gracemere Street, no periodic reporting is proposed (as it would typically be undertaken at six (6) monthly intervals).

Should works continue beyond six (6) months which involve the impact to on-street parking, a report will be prepared and issued to the Planning Secretary and City of Canada Bay Council in accordance with condition D91 (k).

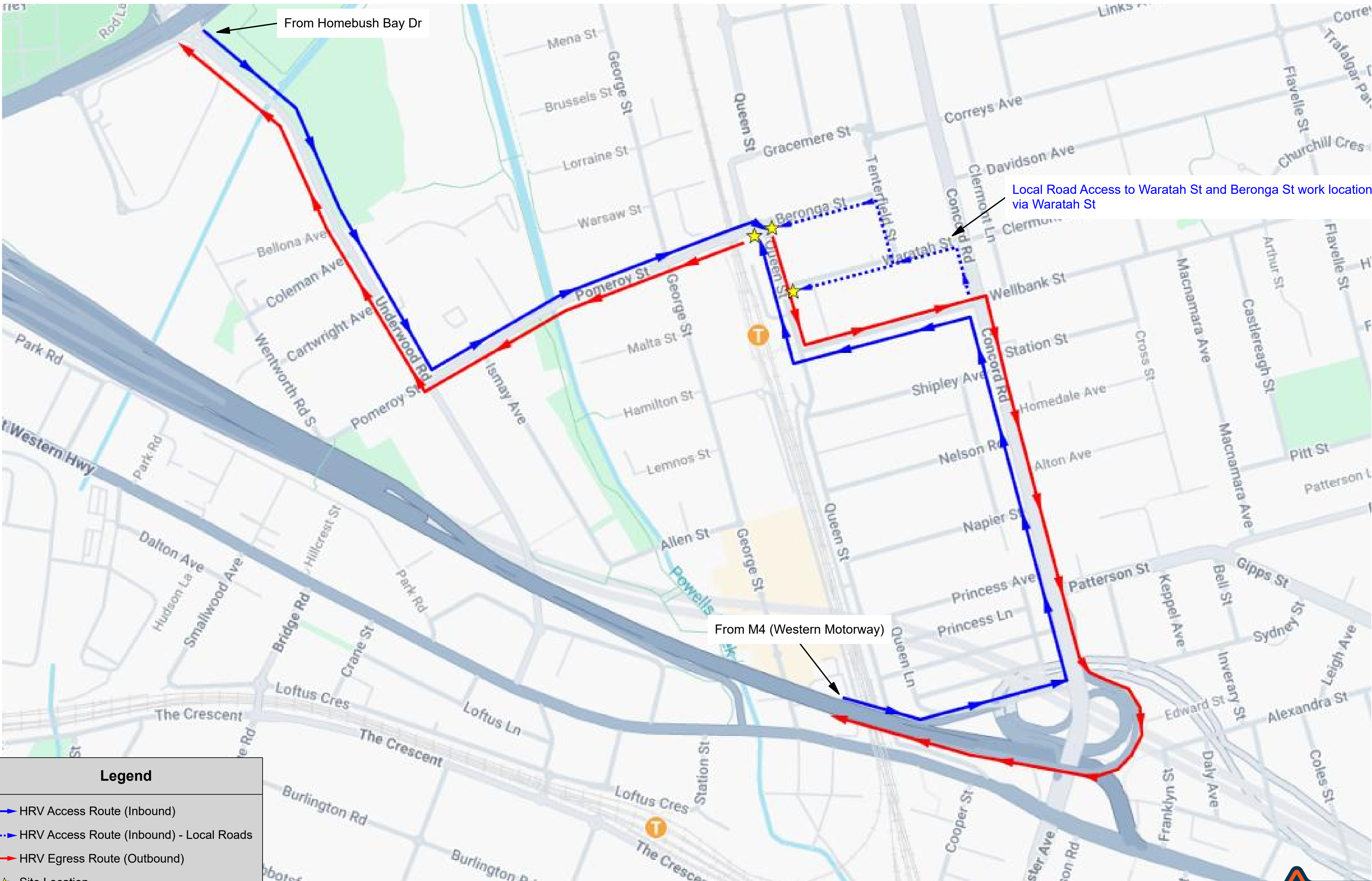
Appendix A – Vehicle movement plans

VMP - Heavy Rigid Vehicles

Inbound/Outbound Haulage Routes - Overview



TGS Ref No:	R25-SYS-NSS-VMP-003			PAGE 1 of 1
Revision No:				
REV 1	Designed by:	Name Sarah Brennan	PWZTMP Licence TCT0065692	Date 27/10/2025
	Approved by:	Michael Arthur	TCT0049712	27/10/2025



Legend

HRV Access Route (Inbound)

HRV Access Route (Inbound) - Local Roads

HRV Egress Route (Outbound)

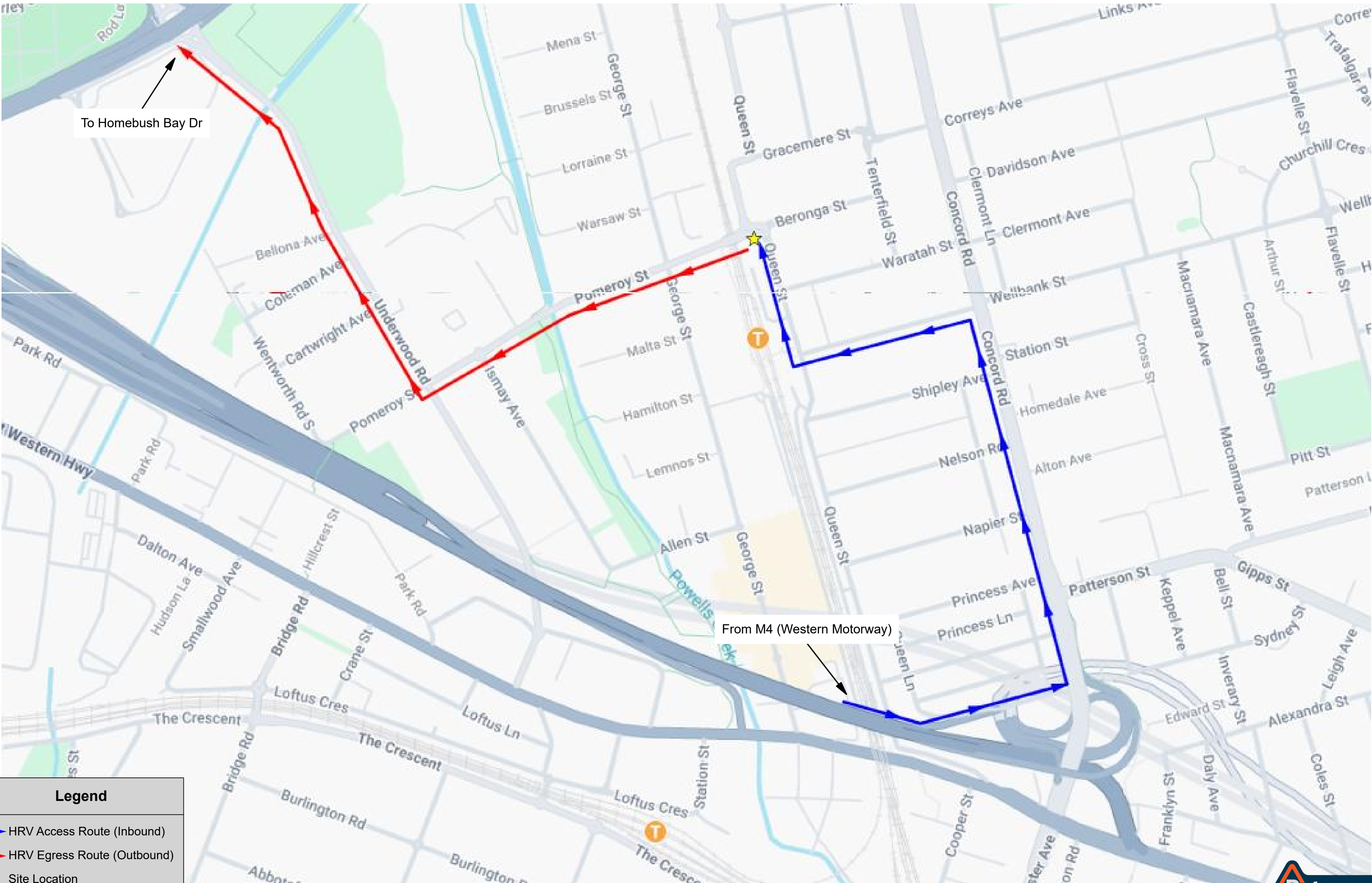
Site Location



VMP - Heavy Rigid Vehicles
Inbound/Outbound Haulage Routes -
Worksites located on Western side of Queen St



TGS Ref No:	R25-SYS-NSS-VMP-004			PAGE 1 of 1
Revision No:				
REV 0	Designed by:	Name Sarah Brennan	PWZTMP Licence TCT0065692	Date 27/10/2025
	Approved by:	Michael Arthur	TCT0049712	27/10/2025



Legend

HRV Access Route (Inbound)

HRV Egress Route (Outbound)

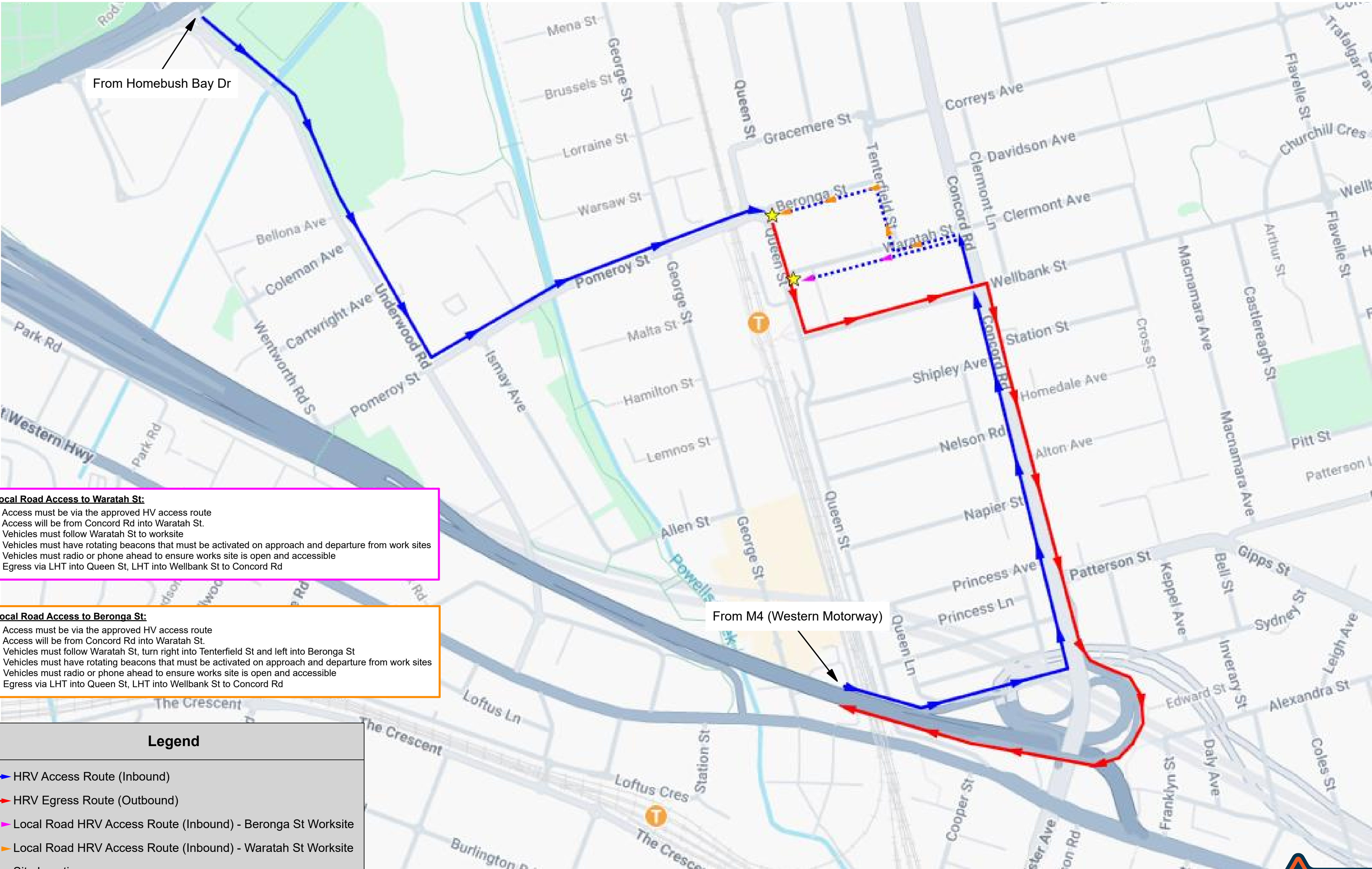
Site Location



VMP - Heavy Rigid Vehicles
Inbound/Outbound Haulage Routes -
Worksites located on Eastern side of/ or East of Queen St



TGS Ref No:	R25-SYS-NSS-VMP-005			PAGE 1 of 1
Revision No:				
REV 1	Designed by:	Name Sarah Brennan	PWZTMP Licence TCT0065692	Date 27/10/2025
	Approved by:	Michael Arthur	TCT0049712	27/10/2025



Local Road Access to Waratah St:

1. Access must be via the approved HV access route
2. Access will be from Concord Rd into Waratah St.
3. Vehicles must follow Waratah St to worksite
4. Vehicles must have rotating beacons that must be activated on approach and departure from work sites
5. Vehicles must radio or phone ahead to ensure works site is open and accessible
6. Egress via LHT into Queen St, LHT into Wellbank St to Concord Rd

Local Road Access to Berongah St:

1. Access must be via the approved HV access route
2. Access will be from Concord Rd into Waratah St.
3. Vehicles must follow Waratah St, turn right into Tenterfield St and left into Berongah St
4. Vehicles must have rotating beacons that must be activated on approach and departure from work sites
5. Vehicles must radio or phone ahead to ensure works site is open and accessible
6. Egress via LHT into Queen St, LHT into Wellbank St to Concord Rd

Legend

HRV Access Route (Inbound)

HRV Egress Route (Outbound)

Local Road HRV Access Route (Inbound) - Berongah St Worksite

Local Road HRV Access Route (Inbound) - Waratah St Worksite

Site Location

Appendix B – Evidence of consultation

SSI-10038 CoA A6: Record and Evidence of Consultation

Project Name	Sydney Metro West Stage 1 Phase J - North Strathfield Enabling Works
Planning Approval	SSI-10038
Document Title	Construction Parking and Access Strategy
TB Document no.	SMWSDDS-SYS-NST-TF-PLN-000009

Record of Consultation

Date	Activity/Event	Evidence
5/9/25	Meeting invitation sent to Canada Bay Council for Project Briefing	Refer to Attachment A in this Appendix.
10/9/25	Project Briefing PowerPoint Presentation provided to City of Canada Bay Council	Refer to Attachment B in this Appendix.
7/10/25	CPAS issued to stakeholders (including City of Canada Bay Council, Customer Journey Planning and TfNSW) via TeamBinder review workflow (TB Transmittal No. SMWSDDS-SMD-TX-008334) with review due date of 21/10/25.	Refer to Attachment C in this Appendix.
22/10/25	TB review workflow comments issued by Sydney Metro to Syscon via TeamBinder (TB transmittal No. SMWSDDS-SMD-TX-008379)	Refer to Attachment D in this Appendix.
31/10/25	- Rev 01.02 issued by Syscon via TB for review comment closure. - TB Transmittal (SMWSDDS-SMD-TX-008398) issued by Sydney Metro to stakeholders including City of Canada Bay council advising of commencement of comment closure workflow with review due date of 3/11/25.	Refer to Attachment E in this Appendix.
	- All TB review comments closed out by reviewers (TB comments register provided) - Final version of CPAS (rev 01.02) uploaded to DPHI planning portal (SSI-10038-PA-835)	Refer to Attachment F in this Appendix.

SMW EWNS CPAS Evidence of Consultation - Attachment A

5/9/25: Meeting invitation sent to Canada Bay Council for Project Briefing

FileMeetingHelpAcrobatTell me what you want to do

DeleteRespondShare to TeamsSend to OneNoteCalendarInfrastructure R...GONETo ManagerQuick Steps

MoveRulesTagsEditingImmersiveZoomReport PhishingViva InsightsProtectionAdd-in

North Strathfield Enabling Works - Council briefing

AKAndrew Kourous

✓ Accept

? Tentative

✗ Decline

⌚ Propose New Time

📧

⋮

Required Burak Gunay; Julian Latouche; Lawrence Doherty; Kai Zhu; Priyesh Das; joshua@syscon.net.au; Adrian Washington-Syscon

Optional Matt Martin; Lawrence Huang

ⓘ We couldn't find this meeting in the calendar. It may have been moved or deleted.

⌚ Wednesday, 10 September 2025 2:00 PM-2:30 PM (Monday, 9 September 2025 3:15 PM-3:45 PM)

📍 Microsoft Teams Meeting

Agenda

1. Introductions

2. Scope of works

3. Program of works

4. Restorations

5. Any other business

Microsoft Teams [Need help?](#)

[Join the meeting now](#)

Meeting ID: 484 618 829 355 0

Passcode: 2tZ3Dj9x

Dial in by phone

[+61 2 9161 1290,984735581#](#) Australia, Sydney

[Find a local number](#)

Phone conference ID: 984 735 581#

For organizers: [Meeting options](#) | [Reset dial-in PIN](#)

OFFICIAL

SMW EWNS CPAS Evidence of Consultation - Attachment B

10/9/25: Project Briefing PowerPoint Presentation provided to City of Canada Bay Council

Sydney Metro West



City of Canada Bay Project Briefing

SMC-24-1333 - Design and Construction of North Strathfield Electrical Kiosk Works

5th of September 2025

sydneymetro.info



OFFICIAL

Acknowledgement of
Country

Sydney Metro pays respect to Elders past and present, and recognises and celebrates the diversity of Aboriginal peoples and their ongoing cultures and connections to the lands and waters of NSW.



Agenda

- 1 Project Scope of Works**

- 2 Indicative Working Dates**

- 3 Proposed Working Hours**

- 4 Parking Impacts for Works**

- 5 Access**

- 6 Noise Impacts**

- 7 Notifications and Engagement**

- 8 Traffic Documentation**

- 9 Proposed TGS items**

Project Scope of Works

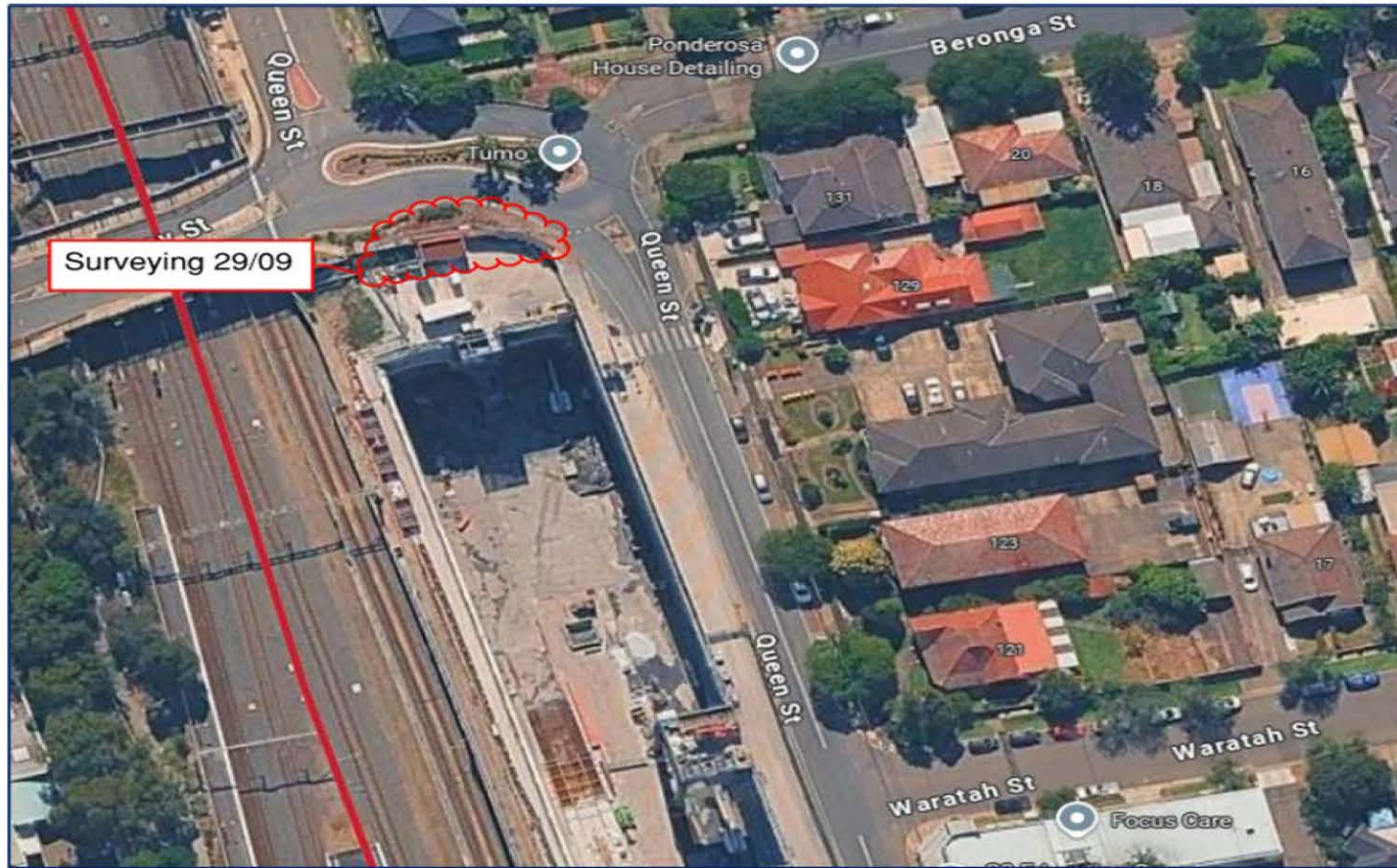
- **Design & Approvals** – ASP3 design modifications, re-submission, and coordination with Ausgrid for re-certification.
- **Planning Approvals & Management Plans** – Preparation and submission of all required planning approvals, permits, and management plans in consultation with City of Canada Bay and Sydney Metro.
- **ASP1 Electrical Infrastructure Upgrade** – Installation of a new kiosk substation & associated civil works to support Sydney Metro North Stratfield Station Construction, including associated high-voltage and low-voltage inter-connections to Ausgrid's network.
- **ASP2 Internal Electrical Installations** – Connection from the new kiosk substation to the new Main Switch Board (MSB), and from the new MSB to both the generator and the existing distribution board.
- **Removal of Temporary Supply** – Permanent disconnection and safe removal of redundant temporary electrical supply infrastructure.
- **Outage & Commissioning** – Planned power outage to safely cut over to the new electrical infrastructure.
- **Restoration** – Full reinstatement of all disturbed areas, including footpaths and internal site works, in line with City of Canada Bay standards.

Indicative Working Dates (Subject to Approvals)

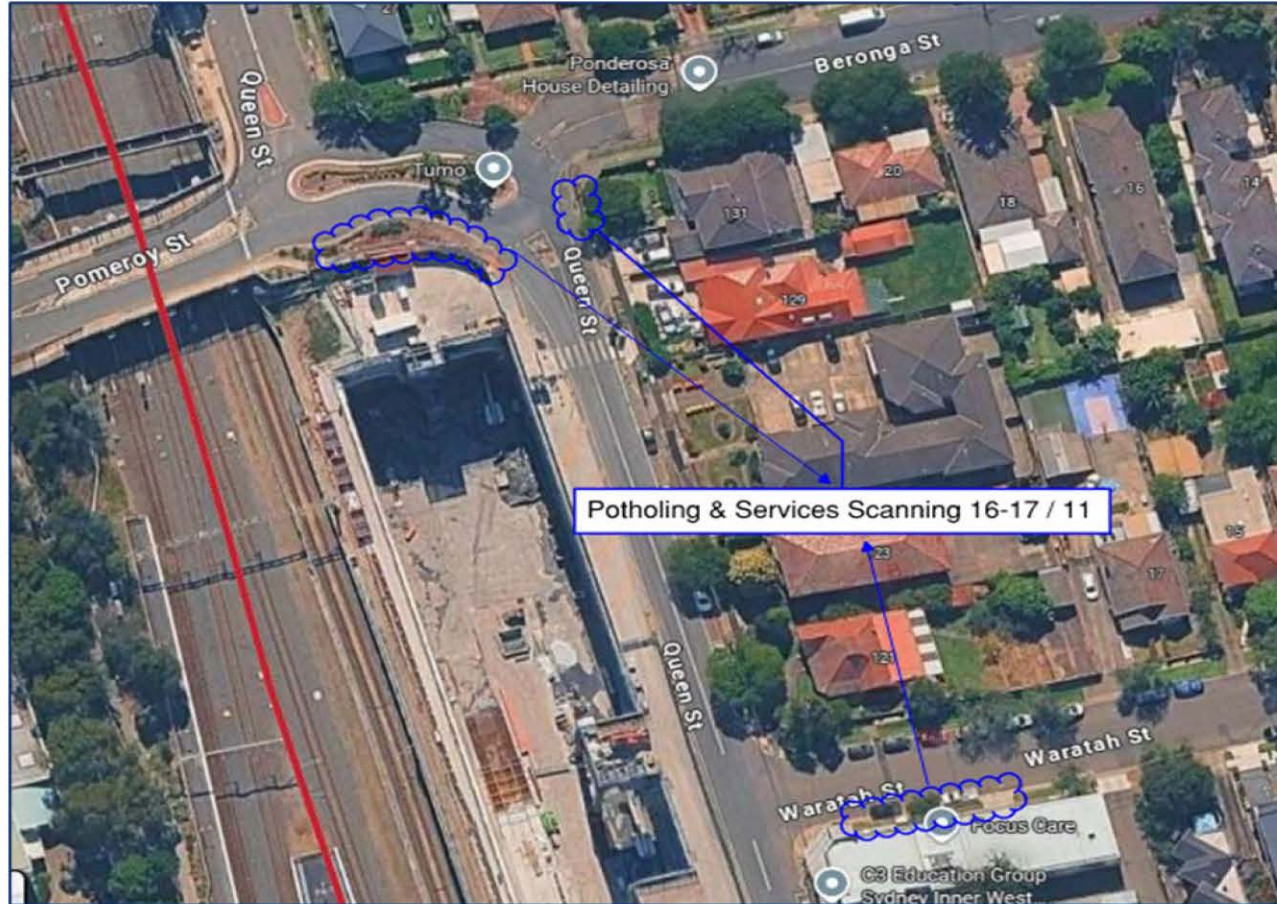
Key Factors	Indicative Dates	Indicative Duration	Indicative Road Impacts
Surveying	29/09/25	1 x Day	Nil.
Potholing & Service Scan	16/11/25	2 x Nights	Lane Closures & Pedestrian Impacts
Joint Bay Excavations Existing HV Cable Testing	23/11/25	2 x Nights	Impact to Local Business, Parking, Pedestrians & Lane Closures
LV Cable Trenching	30/11/25	2 x Nights	Lane Closures & Pedestrian Impacts
LV Cable Installation	07/12/25	1 x Night	Lane Closures & Pedestrian Impacts
Backfill Joint Bays & Temporary Restorations	08/12/2025	1 x Night	Impact to Local Business, Parking, Pedestrians & Lane Closures
Pre Outage Works	11/01/2026	1 x Night	Lane Closures & Pedestrian Impacts
Outage	12/01/2026	1 x Night	Lane Closures & Pedestrian Impacts
Temporary Supply Removal	18/01/2026	1 x Night	Lane Closures & Pedestrian Impacts
Permanent Restorations	01/02/2026	2 x Nights	Impact to Local Business, Parking, Pedestrians & Lane Closures

Note: The above schedule represents works that will impact the surrounding local area, including road users and nearby residents. Additional activities associated with the project will be undertaken from within the project site boundary and will not affect local traffic, access, or community amenity.

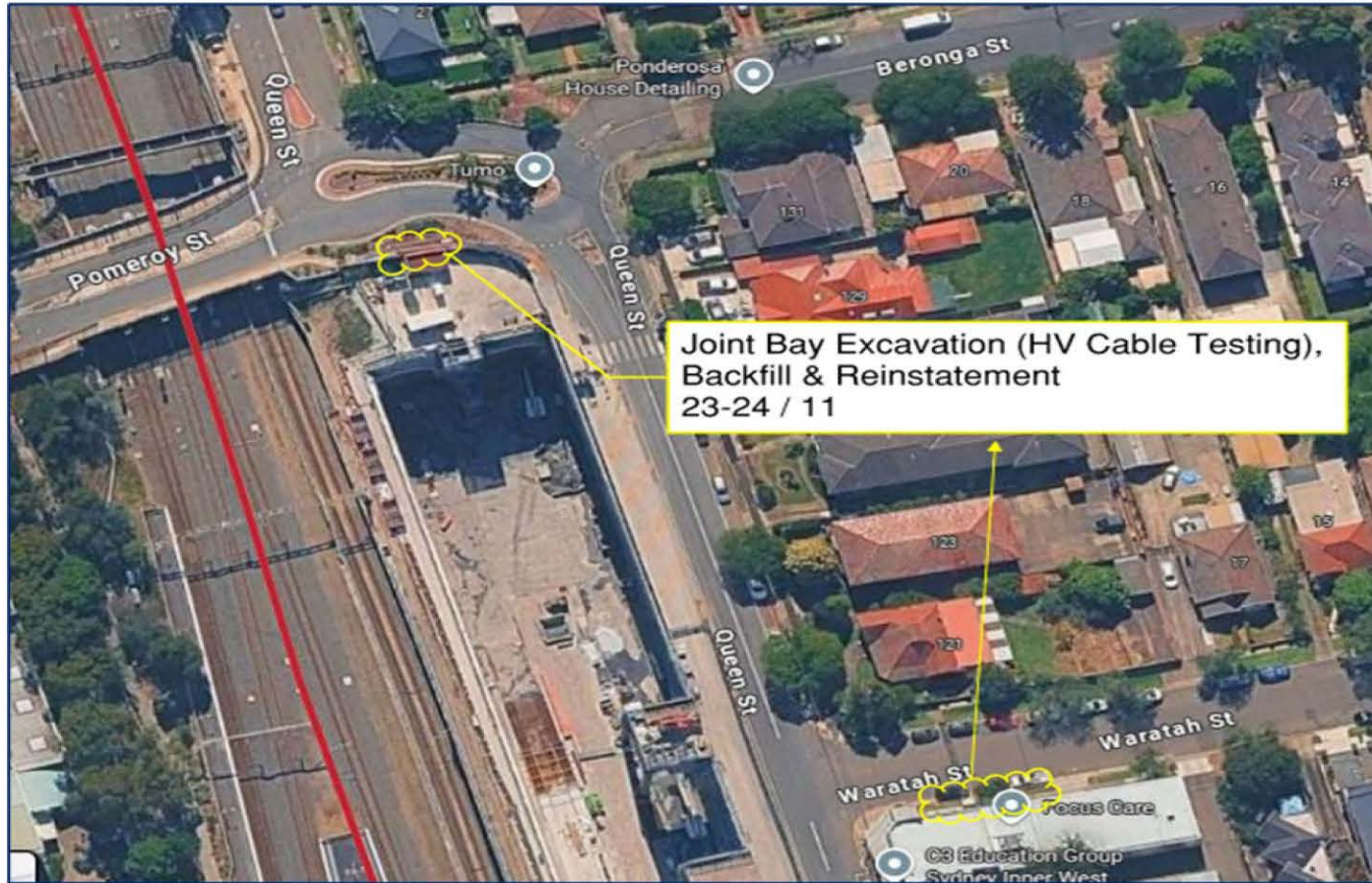
Surveying (indicative working dates)



Potholing & Services Scan (indicative working dates)



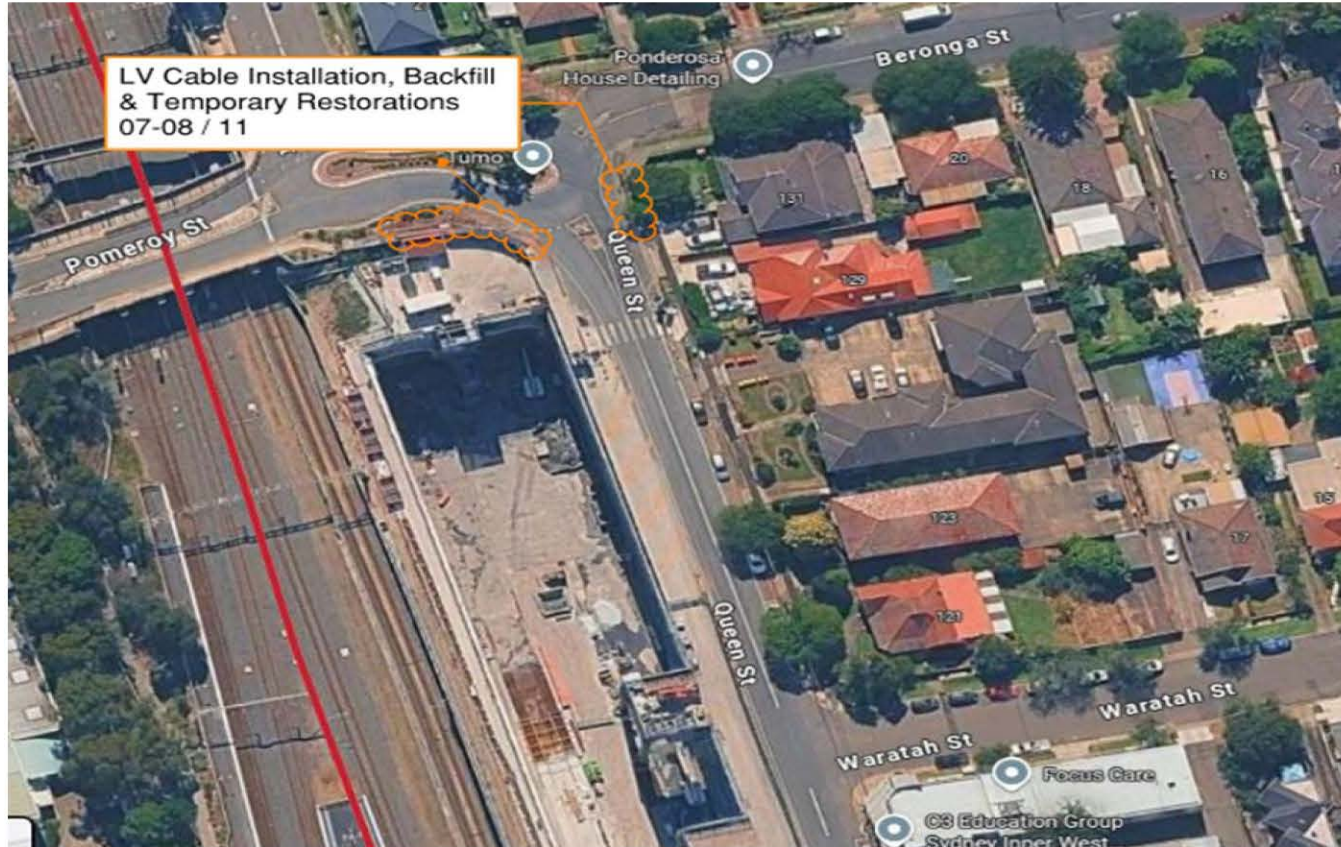
Joint Bay Excavations (indicative working dates)



LV cable trenching (indicative working dates)



LV cable installation, Backfill & Temp restoration (indicative working dates)



Pre Outage & Outage Works (indicative working dates)



Temp Power Supply Removal (indicative working dates)



Permanent Restoration (indicative working dates)



Proposed working hours (Subject to Approvals)

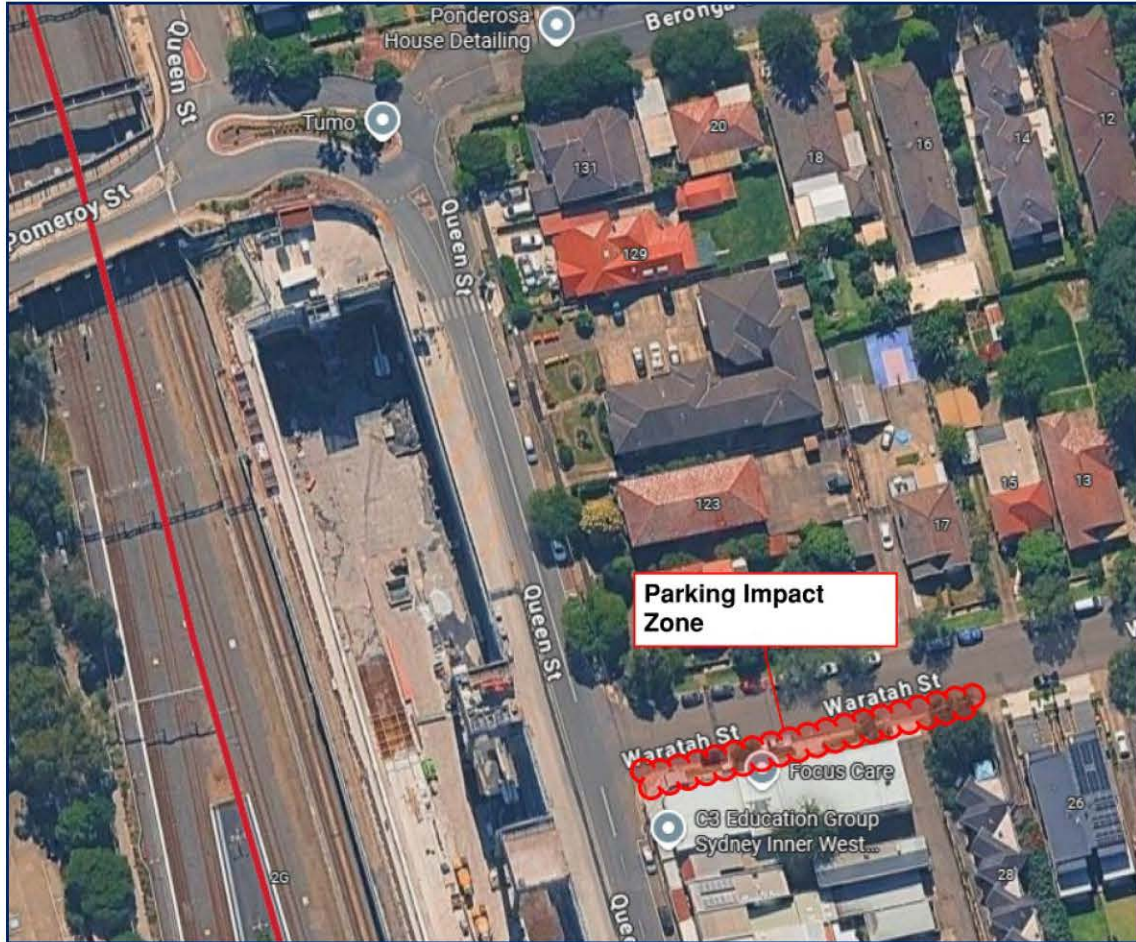
Internal Works (within project site boundary):

- 7:00am – 5:00pm, Monday to Friday
- No community impact anticipated

External Works (affecting local area):

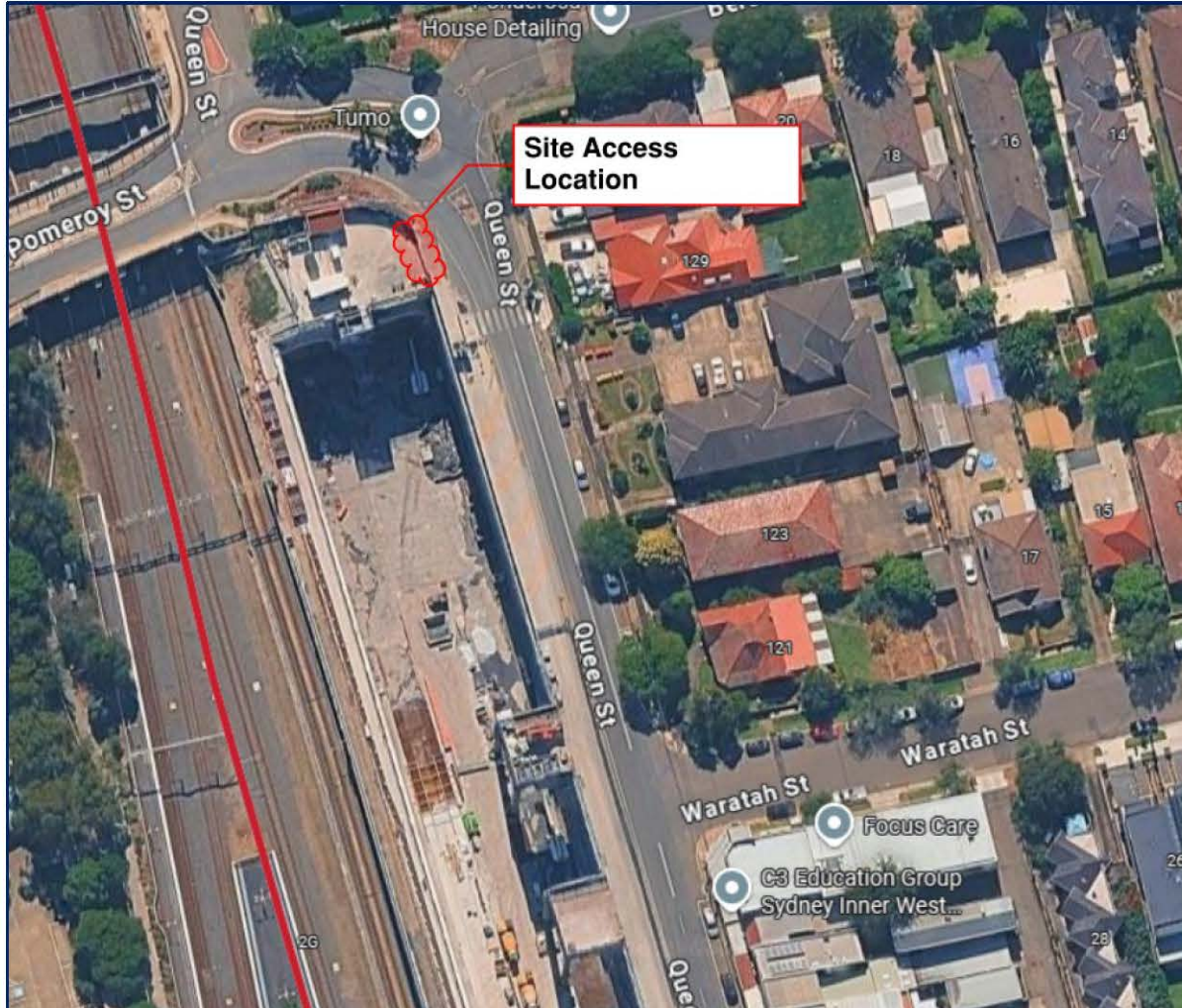
- 8:00pm – 5:00am, Sunday & Monday Nights
- Subject to approved Road Occupancy Licences (ROLs)
- Planned to minimise traffic and resident disturbance

Parking Impacts for Works (Design Verification)



- Temporary parking restrictions will be required along Waratah Street to facilitate high-voltage joint bay excavation, pre-outage works, outage cut-ins, and permanent restoration activities. Parking will be reinstated once all external works are complete.

Access



- Access to the work site will be via Queen Street at the designated entry point shown. This access location has been selected to minimise disruption to local traffic and residents

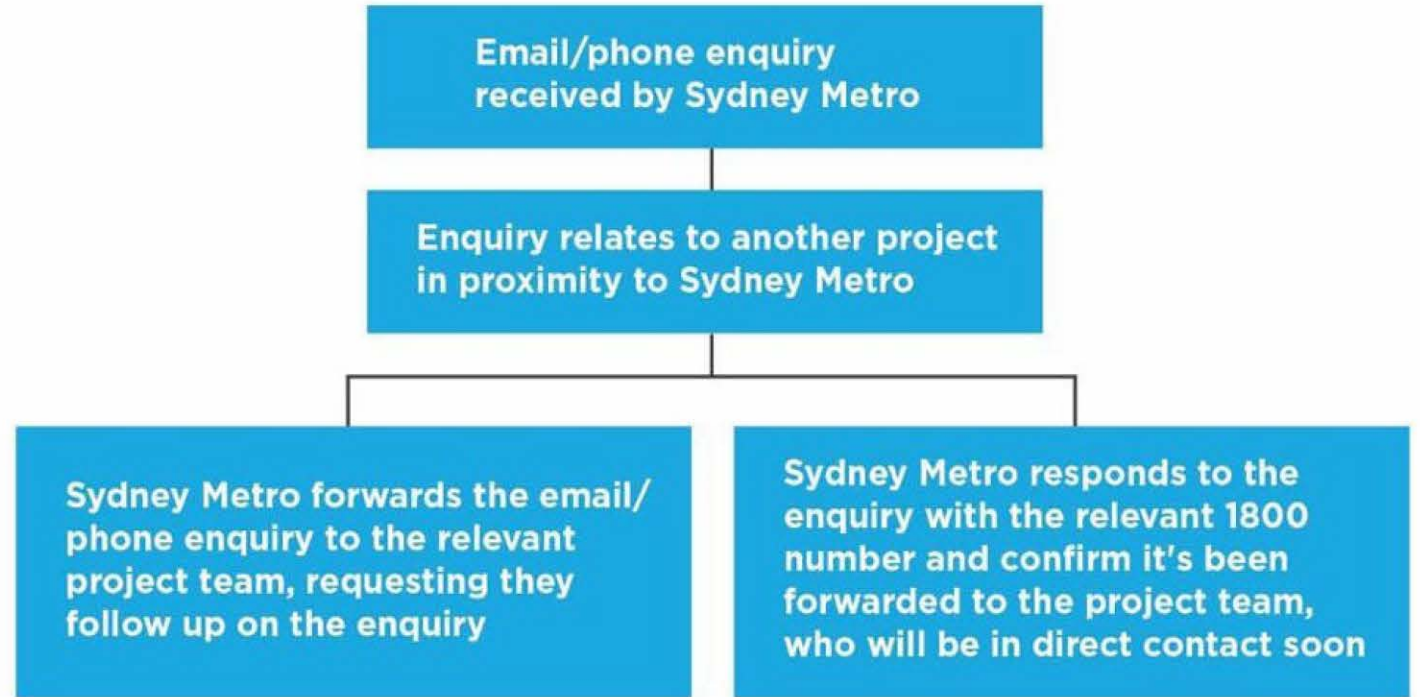
Noise Impacts

- **Non-Destructive Digging (NDD)** excavation – vacuum trucks and suction equipment.
- **Trenching works** – saw cutting, excavation, and compaction.
- **Joint bay excavations** – concrete breakout, excavation, and backfill.
- **Internal site noise** – concrete cutting, small plant operation, and excavation.
- **Cable installation** – pulling winches and rollers (intermittent noise).
- **Temporary restorations** – hot/cold mix application and compaction.
- **Outage works** – Use of plant and machinery.

Notifications & Engagement

Sydney Metro West has an established Project Communications Team and will provide an embedded Project Communications Resource who will manage the Works public communication engagement including development of public documentation including construction notifications.

Communication and liaison will be undertaken in accordance with Sydney Metro's Overarching Community Communications Strategy.



Traffic Documentation

TGS under development – expected submission (for review) is end of September 2025

CTMP under development – expected submission (for review) is end of September 2025

HVLR under development – expected submission (for review) is end of September 2025

CPAS under development – expected submission (for review) is end of September 2025

Road Dilapidation Report under development - expected submission (for review) is end of September 2025

Proposed TGS's items for Works

- Short-term shuttle flow (stop/slow).
- Proposed ROL hours (subject to approval):
 - 8am to 5pm (Monday to Friday - Days)
 - 8pm – 5am (Sunday & Monday - Nights)
- No Bus Stop or Bus Routes Impacts.
- Community notifications will be distributed at least 7 days prior to any new works.
- Pedestrians escorted around work area.
- Emergency services access always maintained.

Have your say

If you have any questions or would like more information please contact our project team:

1800 612 173 Community information line open 24 hours

sydneymetrowest@transport.nsw.gov.au

Sydney Metro West, PO Box K659, Haymarket NSW 1240



Translating and interpreting service

If you need help understanding this information, please contact the Translating and Interpreting Service on **131 450** and ask them to call us on **1800 612 173**

Thank you

sydneymetro.info



SMW EWNS CPAS Evidence of Consultation - Attachment C

7/10/25: CPAS issued to stakeholders (including City of Canada Bay Council, Customer Journey Planning and TfNSW) via TeamBinder review workflow (TB Transmittal No. SMWSDDS-SMD-TX-008334) with review due date of 21/10/25.

From: Nancy Indahwati via InEight Document
To: Valerie Lebon
Subject: EWNS - Construction Parking and Access Strategy (CPAS) - Issued for Review
Date: Tuesday, 7 October 2025 9:42:13 AM
Attachments: SMWSDDS - Feedback on Document Comments or Responses.xlsx
SMWSDDS - Feedback on Document Comments or Responses.xlsx

CAUTION: This email is sent from an external source. Do not click any links or open attachments unless you recognise the sender and know the content is safe.

Document Transmittal

Transmittal No:	SMWSDDS-SMD-TX-008334
Contract No:	EWNS - SMC-24-1333 - SMWST North Strathfield Power Enabling Works
Sub Contract:	-
Date:	07 October 2025, 09:41 AM

Issued	Name
By	Nancy Indahwati (Sydney Metro)

Issued	Name
To	Burak Gunay (Sydney Metro) ; Lawrence Doherty (Sydney Metro) ; Julian Latouche (Sydney Metro) ; Ghaith Farfour (Sydney Metro) ; Nita Hutapea (Sydney Metro) ; Richard Banzon (Sydney Metro) ; Andrew Hendy (Sydney Metro) ; John Ieroklis (Sydney Metro) ; Valerie Lebon (Sydney Metro) ; Andrew Kourou (Sydney Metro) ; Matt Martin (Sydney Metro) ; Kai Zhu (City of Canada Bay) ; Darren Crowley (Customer Journey Planning) ; Peter Keyes (Customer Journey Planning) ; Tash Pett (Customer Journey Planning) ; Vidushi Sahni (Customer Journey Planning) ; George Kollias (Healthy Buildings International) ; Hassan Yousaf (Roads and Maritime Services (part of TfNSW division)) ; Morry Ghosn (Roads and Maritime Services (part of TfNSW division)) ; Nicole Li (Roads and Maritime Services (part of TfNSW division)) ; Tarun Malviya (Roads and Maritime Services (part of TfNSW division)) ; Zakaria Ahmad (Roads and Maritime Services (part of TfNSW division)) ; Luke Wilby (Transport for New South Wales)
Cc	Joel Azzopardi (Sydney Metro) ; Transmittal SMD OpenAccess (Sydney Metro) ; Rosina Sharma (Sydney Metro)

Reason for Issue	Issued for Review		
Respond By Message	Please submit your comments by	Respond By Date	21 October 2025
Subject	EWNS - Construction Parking and Access Strategy (CPAS) - Issued for Review		

Dear Review Team Member,

Please find EWNS - CPAS and HVLRL, attached for your review and comment.

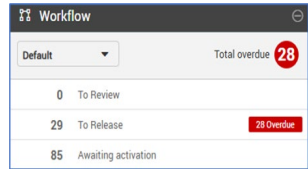
This transmittal supports Syscon submission under SMWSDDS-SYS-TX-000008, 07 October 2025.

Please note:

Review Coordinator is: **Richard Banzon**

Review Due Date: 21 October 2025

Workflow has been activated for the relevant reviewers as per the Review Matrix, you can access your review item via the workflow link in the dashboard



- Mark your review as 'Complete' once done (use the 'checkbox' on the Document Review screen). This will avoid you being chased unnecessarily to action the review
- If you are a cc in this transmittal, it has been issued for Information Only and there is no requirement to review
- Each comment must be a single item, please don't put two or more comments in one item
- Don't paste an image/photo, instead attach it to the comment as a file
- Comments not made via TeamBinder or outside of the review period will not be accepted

How to fill comment in TeamBinder

Comment	Reviewer's Comment
Review Doc. No	TeamBinder Document Number
Document Ref	The section or page of the document reviewer can reference to. (Section 1/Page 7)
Deed Ref	If the comment is related to a section or clause in the deed, otherwise if it is not related to the deed put N/A (not applicable) Comment Category: Non-Compliance (Actual, Potential, Minor) – Deed Ref / SRS (System Requirement Specification) or Standard is required – please refer to the relevant deed / SRS Observation – Deed Ref is filled as N/A
Category	Choose from the dropdown: Actual Non-Compliance Minor Non-Compliance Potential Non-Compliance

	Observation
<p>Please refer to the Reviewer's Guide - SMWSTWST-SMD-1NL-DC-GUD-000001 or contact Nancy Indahwati should you have any issues with commenting.</p> <p>Kind regards,</p> <p>Nancy Indahwati Document Control Sydney Metro West</p>	

[Click here to download all Transmittal files.](#)

Item	Document No	Title	Rev	Sts	Type	Design Package No.	Alt Doc No
1	SMWSDDS-SYS-NST-TF-PLN-000009	EWNS - Construction Parking and Access Strategy (CPAS)	-01	RVW	PLN		

Generated by InEight Document © 2001-2025 InEight Inc

TeamBinder Transmittal Reference: (E985A2B2-6F30-4428-BF90-47419E11EE37)

SMW EWNS CPAS Evidence of Consultation - Attachment D

22/10/25: TB review workflow comments issued by Sydney Metro to Syscon via TeamBinder (TB transmittal No. SMWSDDS-SMD-TX-008379)

From: [Nancy Indahwati via InEight Document](#)
To: [Valerie Lebon](#)
Subject: EWNS - Construction Parking and Access Strategy (CPAS) - SM Review Comment
Date: Wednesday, 22 October 2025 4:10:20 PM
Attachments: [ATT00001.jpg](#)
[ATT00002.jpg](#)
[SMWSDDS - Feedback on Document Comments or Responses.xlsx](#)
[SMWSDDS - Feedback on Document Comments or Responses.xlsx](#)

CAUTION: This email is sent from an external source. Do not click any links or open attachments unless you recognise the sender and know the content is safe.

Document Transmittal

Transmittal No:	SMWSDDS-SMD-TX-008379
Contract No:	EWNS - SMC-24-1333 - SMWST North Strathfield Power Enabling Works
Sub Contract:	-
Date:	22 October 2025, 04:09 PM

Issued	Name
By	Nancy Indahwati (Sydney Metro)

Issued	Name
To	Adrian Washington (Syscon) ; Stuart Watkins (Syscon)
Cc	Jo Robertson (Healthy Buildings International) ; Valerie Lebon (Sydney Metro) ; Demi Tascas (Sydney Metro) ; Nancy Indahwati (Sydney Metro) ; Annie Lundon (Sydney Metro) ; Nicole Johnson (Sydney Metro) ; Transmittal SMD OpenAccess (Sydney Metro) ; George Kollias (Healthy Buildings International) ; David Hanson (Acoustic Studio) ; Richard Banzon (Sydney Metro) ; Burak Gunay (Sydney Metro) ; Julian Latouche (Sydney Metro) ; John Ieroklis (Sydney Metro) ; Andrew Hendy (Sydney Metro) ; Jeff Parnell (Sydney Metro) ; Andrew Kourous (Sydney Metro) ; Andre Barros Curado Fleury (Sydney Metro) ; Douglas Tran (Sydney Metro) ; Anthony Coward (Sydney Metro) ; Rosina Sharma (Sydney Metro)

Reason for Issue	Issued for Information
Subject	EWNS - Construction Parking and Access Strategy (CPAS) - SM Review Comment
<p>Dear Syscon,</p> <p>Please see attached review comments for EWNS - Construction Parking and Access Strategy (CPAS), issued by Syscon on <i>Transmittal no SMWSDDS-SYS-TX-000008 – 03 October 2025</i>.</p> <p>Principal Representative request that Syscon to input all comment responses in the documents and re-submit for review.</p> <p>Kind Regards</p> <p>Nancy Indahwati Document Control Sydney Metro West</p>	

[Click here to download all Transmittal files.](#)

Item	Document No	Title	Rev	Sts	Type	Design Package No.	Alt Doc No
1	SMWSDDS-SYS-NST-TF-PLN-000009	EWNS - Construction Parking and Access Strategy (CPAS)	-01	RVW	PLN		
2	SMWSDDS-SYS-NST-TF-REP-000010	EWNS - Heavy Vehicle Local Road (HVLRL)	-01	RVW	REP		

Generated by InEight Document © 2001-2025 InEight Inc

TeamBinder Transmittal Reference: {B41C686F-1A90-4BF4-A9D1-F5413CD56014}

SMW EWNS CPAS Evidence of Consultation - Attachment E

31/10/25: TB Transmittal (SMWSDDS-SMD-TX-008398) issued by Sydney Metro to stakeholders including City of Canada Bay council advising of commencement of comment closure workflow with review due date of 3/11/25.

From: [Nancy Indahwati via InEight Document](#)
To: [Valerie Lebon](#)
Subject: EWNS - Construction Parking and Access Strategy (CPAS) - Issued for Review and Comments Close out
Date: Friday, 31 October 2025 11:52:35 AM
Attachments: [SMWSDDS - Feedback on Document Comments or Responses.xlsx](#)
[SMWSDDS - Feedback on Document Comments or Responses.xlsx](#)

CAUTION: This email is sent from an external source. Do not click any links or open attachments unless you recognise the sender and know the content is safe.

Document Transmittal

Transmittal No:	SMWSDDS-SMD-TX-008398
Contract No:	EWNS - SMC-24-1333 - SMWST North Strathfield Power Enabling Works
Sub Contract:	-
Date:	31 October 2025, 11:52 AM

Issued	Name
By	Nancy Indahwati (Sydney Metro)

Issued	Name
To	George Kollias (Healthy Buildings International) ; Kai Zhu (City of Canada Bay) ; Richard Banzon (Sydney Metro) ; Valerie Lebon (Sydney Metro)
Cc	Transmittal SMD OpenAccess (Sydney Metro) ; Rosina Sharma (Sydney Metro) ; Burak Gunay (Sydney Metro) ; Lawrence Doherty (Sydney Metro) ; Julian Latouche (Sydney Metro) ; Ghaith Farfour (Sydney Metro) ; Andrew Hendy (Sydney Metro) ; John Ieroklis (Sydney Metro) ; Andrew Kourou (Sydney Metro) ; Nita Hutapea (Sydney Metro) ; Matt Martin (Sydney Metro) ; Darren Crowley (Customer Journey Planning) ; Peter Keyes (Customer Journey Planning) ; Tash Pett (Customer Journey Planning) ; Vidushi Sahni (Customer Journey Planning) ; Hassan Yousaf (Roads and Maritime Services (part of TfNSW division)) ; Tarun Malviya (Roads and Maritime Services (part of TfNSW division)) ; Nicole Li (Roads and Maritime Services (part of TfNSW division)) ; Zakaria Ahmad (Roads and Maritime Services (part of TfNSW division)) ; Luke Wilby (Transport for New South Wales)

Reason for Issue	Issued for Review		
Respond By Message	Please submit your comments by	Respond By Date	03 November 2025
Subject	EWNS - Construction Parking and Access Strategy (CPAS) - Issued for Review and Comments Close out		

Dear Review Team Member,

Please find EWNS - Construction Parking and Access Strategy (CPAS), attached for your review and comment close out.

This transmittal supports Syscon Submission, Transmittal no SMWSDDS-SYS-TX-000029 - 31 October 2025.

Please note:

Lead Reviewer: Richard Banzon

Review Due Date: 03 November 2025

Workflow has been activated for relevant reviewers. **Please review the contractor's response and mark your comment as 'Closed-Out' if applicable**

Mark your review as 'Complete' once done (use the 'checkbox' on the Document Review screen)

If you are a cc'd in this transmittal it has been issued for Information only and there is no requirement to review

Kind regards,

Nancy Indahwati
Document Control
Sydney Metro West

[Click here to download all Transmittal files.](#)

Item	Document No	Title	Rev	Sts	Type	Design Package No.	Alt Doc No
1	SMWSDDS-SYS-NST-TF-PLN-000009	EWNS - Construction Parking and Access Strategy (CPAS)	01.02	RVW	PLN		

SMW EWNS CPAS Evidence of Consultation - Attachment F

31/10/25: All TB review comments closed out by reviewers (TB comments register provided)

#DocumentNoRevStsDiscipline

SMWSDD5-SYS-NST-TF-

1PLN-00000901RVWTF

#	CommentLevel	Attach	Item	Date	Rev	Sts	CommentedBy	CommentedByCompany	Comments	Review Doc. No	Document Ref	Deed Ref	Category	Closed out
1	Public	No	19	2025-10-24	01	RVW	Kai Zhu	City of Canada Bay	No further comments	SMWSDD5-SYS-NST-TF-PLN-000009	na	na	Observation	Y
2	Public	No	18.01	2025-10-29	01	RVW	Adrian Washington	Syscon	This has been updated, and cross references checked.	SMWSDD5-SYS-NST-TF-PLN-000009	Table 1	n/a	Actual Non-Compliance	Y
3	Public	No	18	2025-10-21	01	RVW	Valerie Lebon	Sydney Metro	As all parts of SSI-10038 Condition D91 (incorrect E109) are fully applicable to the Principal Contractor please ensure that all points in the relevant conditions are addressed or justified in the respective CPAS section. In this case there should not be 'N/A' stated against point (h). The answer may seem obvious but justification needs to be stated nevertheless. Please note that the correct Condition (SSI-10038 D91) has 11 sub-points (a-k) rather than E109's 10 (a-j).	SMWSDD5-SYS-NST-TF-PLN-000009	Table 1	n/a	Actual Non-Compliance	Y
4	Public	No	17.01	2025-10-29	01	RVW	Adrian Washington	Syscon	This has all been updated throughout.	SMWSDD5-SYS-NST-TF-PLN-000009	Section 5.3	n/a	Actual Non-Compliance	Y
5	Public	No	17	2025-10-21	01	RVW	Valerie Lebon	Sydney Metro	Incorrect Condition is referenced. Should read 'D90' rather than 'E108'. Ensure all all condition references in entire document are correct	SMWSDD5-SYS-NST-TF-PLN-000009	Section 5.3	n/a	Actual Non-Compliance	Y
6	Public	No	16.02	2025-10-30	01	RVW	Adrian Washington	Syscon	This has now been incorporated into the plan for Gracemere Street impact. It is expected the detour is only required for six shifts which is reflected in the plan.	SMWSDD5-SYS-NST-TF-PLN-000009	Section 3	D91 and D92	Minor Non-Compliance	Y
7	Public	No	16.01	2025-10-29	01	RVW	Adrian Washington	Syscon	This has now been incorporated into the plan for Gracemere Street impact. It is expected the detour is only required for two shifts which is reflected in the plan.	SMWSDD5-SYS-NST-TF-PLN-000009	Section 3	D91 and D92	Minor Non-Compliance	Y
8	Public	No	16	2025-10-17	01	RVW	Richard Banzon	Sydney Metro	The CTMP includes the temporary removal of a parking space on Gracemere Street. However, this is currently not mentioned in the CPAS. Please update to ensure parking impacts are consistent between both documents.	SMWSDD5-SYS-NST-TF-PLN-000009	Section 3	D91 and D92	Minor Non-Compliance	Y
9	Public	No	15.01	2025-10-29	01	RVW	Adrian Washington	Syscon	This has been updated	SMWSDD5-SYS-NST-TF-PLN-000009	Section 7.2	N/A	Actual Non-Compliance	Y
10	Public	No	15	2025-10-15	01	RVW	Richard Banzon	Sydney Metro	Please update the referenced condition to the relevant EIS Stage 1 MCoA	SMWSDD5-SYS-NST-TF-PLN-000009	Section 7.2	N/A	Actual Non-Compliance	Y
11	Public	No	14.01	2025-10-29	01	RVW	Adrian Washington	Syscon	This has been updated	SMWSDD5-SYS-NST-TF-PLN-000009	Section 6.3	N/A	Actual Non-Compliance	Y
12	Public	No	14	2025-10-15	01	RVW	Richard Banzon	Sydney Metro	Please update the referenced condition to the relevant EIS Stage 1 MCoA	SMWSDD5-SYS-NST-TF-PLN-000009	Section 6.3	N/A	Actual Non-Compliance	Y
13	Public	No	13.01	2025-10-29	01	RVW	Adrian Washington	Syscon	Yes, this has been corrected.	SMWSDD5-SYS-NST-TF-PLN-000009	Section 5.3	N/A	Observation	Y
14	Public	No	13	2025-10-15	01	RVW	Richard Banzon	Sydney Metro	Second paragraph states 'The Number of works on a typical shift'. Should this be number of workers?	SMWSDD5-SYS-NST-TF-PLN-000009	Section 5.3	N/A	Observation	Y
15	Public	No	12.01	2025-10-29	01	RVW	Adrian Washington	Syscon	This has been added.	SMWSDD5-SYS-NST-TF-PLN-000009	Section 5.2	N/A	Observation	Y
16	Public	No	12	2025-10-15	01	RVW	Richard Banzon	Sydney Metro	Should also reference the Phase J Construction Traffic Management Plan in addition to the HVLR	SMWSDD5-SYS-NST-TF-PLN-000009	Section 5.2	N/A	Observation	Y
17	Public	No	11.01	2025-10-29	01	RVW	Adrian Washington	Syscon	This has been added.	SMWSDD5-SYS-NST-TF-PLN-000009	Section 5.1	N/A	Observation	Y
18	Public	No	11	2025-10-15	01	RVW	Richard Banzon	Sydney Metro	This section should include a statement on the level of parking impact i.e. negligible, minimal, minor, moderate or major etc and why. Potential reasons include parking impacts limited to night shifts, short in duration, on two (?) shifts only etc, good public transport accessibility for workers, low number of construction workers etc.	SMWSDD5-SYS-NST-TF-PLN-000009	Section 5.1	N/A	Observation	Y
19	Public	No	10.01	2025-10-29	01	RVW	Adrian Washington	Syscon	A sentence has been added to clarify this in Section 4.	SMWSDD5-SYS-NST-TF-PLN-000009	Section 4	N/A	Observation	Y
20	Public	No	10	2025-10-15	01	RVW	Richard Banzon	Sydney Metro	Figure 1 includes Area 4, however this is not shown in Table 3. It's noted that Area 4 is a no stopping area, hence assuming no vehicles parked in Area 4, a sentence below or above the table should be added that confirms this.	SMWSDD5-SYS-NST-TF-PLN-000009	Section 4	N/A	Observation	Y
21	Public	No	09.01	2025-10-29	01	RVW	Adrian Washington	Syscon	This has been updated.	SMWSDD5-SYS-NST-TF-PLN-000009	Section 4	N/A	Observation	Y
22	Public	No	09	2025-10-15	01	RVW	Richard Banzon	Sydney Metro	The first paragraph states that 2 parking spaces are to be removed, whereas Table 3 in Section 3 states 4 parking spaces. Please correct/update as required.	SMWSDD5-SYS-NST-TF-PLN-000009	Section 4	N/A	Observation	Y
23	Public	No	08.01	2025-10-29	01	RVW	Adrian Washington	Syscon	This now has a reference to Area 3 as shown in Figure 1, in relation to the parking survey.	SMWSDD5-SYS-NST-TF-PLN-000009	Section 3	N/A	Observation	Y
24	Public	No	08	2025-10-15	01	RVW	Richard Banzon	Sydney Metro	Consider adding a figure that identifies the section on Waratah Street where parking spaces are proposed to be temporarily removed.	SMWSDD5-SYS-NST-TF-PLN-000009	Section 3	N/A	Observation	Y
25	Public	No	07.01	2025-10-29	01	RVW	Adrian Washington	Syscon	This has been updated.	SMWSDD5-SYS-NST-TF-PLN-000009	Section 1.2 Table 1	N/A	Actual Non-Compliance	Y
26	Public	No	07	2025-10-15	01	RVW	Richard Banzon	Sydney Metro	As per ER comments, this table needs to be revised with the correct SSI and MCoA. This project falls under the Stage 1 EIS, not Stage 3.	SMWSDD5-SYS-NST-TF-PLN-000009	Section 1.2 Table 1	N/A	Actual Non-Compliance	Y
27	Public	No	06.01	2025-10-29	01	RVW	Adrian Washington	Syscon	This has been added.	SMWSDD5-SYS-NST-TF-PLN-000009	Section 1.2	N/A	Observation	Y
28	Public	No	06	2025-10-15	01	RVW	Richard Banzon	Sydney Metro	Last sentence in the second paragraph, consider adding that Impacts would only be temporary and short term.	SMWSDD5-SYS-NST-TF-PLN-000009	Section 1.2	N/A	Observation	Y
29	Public	No	05.01	2025-10-29	01	RVW	Adrian Washington	Syscon	This has been added.	SMWSDD5-SYS-NST-TF-PLN-000009	Section 1.2	N/A	Observation	Y
30	Public	No	05	2025-10-15	01	RVW	Richard Banzon	Sydney Metro	In the first sentence, please add 'Strategy' to the end of 'Construction Parking and Access.'	SMWSDD5-SYS-NST-TF-PLN-000009	Section 1.2	N/A	Observation	Y
31	Public	No	04.01	2025-10-29	01	RVW	Adrian Washington	Syscon	This has been updated.	SMWSDD5-SYS-NST-TF-PLN-000009	Section 1	N/A	Actual Non-Compliance	Y
32	Public	No	04	2025-10-15	01	RVW	Richard Banzon	Sydney Metro	Conditions E108 and E109 are referenced. This should be D90 and D91	SMWSDD5-SYS-NST-TF-PLN-000009	Section 1	N/A	Actual Non-Compliance	Y
33	Public	No	03.02	2025-10-30	01	RVW	Adrian Washington	Syscon	This has been updated to both reflect (5) shifts for Waratah St and (6) shifts for Gracemere St.	CLNK-SYNC-CPAS-NST	Sect 2 & Sect 7.2	-	Observation	Y
34	Public	No	03.01	2025-10-29	01	RVW	Adrian Washington	Syscon	This has been updated to both reflect 10 shifts.	CLNK-SYNC-CPAS-NST	Sect 2 & Sect 7.2	-	Observation	Y
35	Public	No	03	2025-10-15	01	RVW	George Kollias	Healthy Buildings International	Sect 2 Project Scope says "impacts to parking is likely limited to only approximately ten (10) shifts" and Sect 7.2 states "proposed occupation of parking is expected to only take approximately two (2) shifts". Clarify and/or make consistent	CLNK-SYNC-CPAS-NST	Sect 2 & Sect 7.2	-	Observation	Y
36	Public	No	02.01	2025-10-29	01	RVW	Adrian Washington	Syscon	This has been included and addressed in section XX.	CLNK-SYNC-CPAS-NST	Sect 1, incl Table 1	CoA D93	Actual Non-Compliance	Y
37	Public	No	02	2025-10-14	01	RVW	George Kollias	Healthy Buildings International	Include SSI-10038 CoA D93 and address	CLNK-SYNC-CPAS-NST	Sect 1, incl Table 1	CoA D93	Actual Non-Compliance	Y
38	Public	No	01.01	2025-10-29	01	RVW	Adrian Washington	Syscon	This has been updated	CLNK-SYNC-CPAS-NST	Sect 1, incl Table 1	SSI CoA 90-92	Actual Non-Compliance	Y
39	Public	No	01	2025-10-14	01	RVW	George Kollias	Healthy Buildings International	The wrong SSI Approval and CoA references have been included. Revise to include SSI 10038, correct equivalent CoA D90, D91 and D92	CLNK-SYNC-CPAS-NST	Sect 1, incl Table 1	SSI CoA 90-92	Actual Non-Compliance	Y